



WELCOME

TO THE TYNDALE FAMILY

At Tyndale, our Reception provision lays exceptionally strong foundations for every child's future learning and development. In a warm, nurturing and ambitious environment, children are supported to grow in confidence, independence and curiosity from the very start of their school journey.

Through high-quality teaching, purposeful play, carefully planned continuous provision and a strong focus on communication, early reading and personal development, children develop the knowledge, skills and behaviours needed to thrive. Our dedicated staff build strong relationships with every child and family, ensuring all children feel safe, valued and excited to learn as part of the Tyndale Family.





Book Bag
(provided by Tyndale)



White Polo



Navy Jumper



**Black Shoes or
Trainers**



**Grey Trousers or
Shorts**

OR



**Tyndale Gingham
Skirt**



**Navy Shorts and
Plain White Top**

UNIFORM

Visit Monkhouse.com for all school crested uniform!

What does the year look like in

EYFS?



Starting school is a huge milestone, and we are incredibly excited to welcome your child into our Reception family. At Tyndale, we believe the Early Years should be filled with joy, curiosity, wonder and exceptional learning experiences that build the strongest possible foundations for the future.

In Reception, children learn through a carefully planned balance of direct teaching, purposeful play, exploration and high-quality interactions with adults. Every area of our provision has been designed to develop children academically, socially, emotionally and physically so that they flourish both in school and beyond.

The Areas of Learning

The Early Years Foundation Stage curriculum is built around seven areas of learning and development:

Prime Areas

These are the foundations for all future learning.

Communication and Language

Children develop confidence in speaking, listening and understanding through stories, conversations, singing, role play and rich vocabulary experiences.

Personal, Social and Emotional Development

We help children build positive relationships, resilience, independence and emotional regulation so they feel safe, happy and ready to learn.

Physical Development

Children strengthen both fine and gross motor skills through outdoor play, climbing, balancing, writing activities, construction and practical experiences.

Specific Areas

These build upon the prime areas and broaden children's knowledge and understanding of the world.

Literacy

Children develop a love of reading through stories, rhymes, phonics and engaging reading opportunities. They begin learning to read and write through our systematic phonics approach and carefully planned early writing experiences.

Mathematics

Children explore number, pattern, shape, measure and problem solving through practical, hands-on learning and mathematical talk.

Understanding the World

Children learn about people, communities, nature, technology and the wider world through investigations, experiences and curiosity-led learning.

Expressive Arts and Design

Creativity is celebrated through music, art, dance, role play, storytelling and imaginative play experiences.

Our Exceptional Provision

At Tyndale, our Reception environment is intentionally designed to inspire curiosity, independence and deep learning. Children access high-quality indoor and outdoor provision that encourages exploration, creativity and problem solving every single day.

Our classrooms are language-rich, nurturing and highly engaging. Adults carefully model vocabulary, thinking and learning behaviours while supporting children to become increasingly independent and confident learners.

We place great importance on:

- Developing a lifelong love of reading
- Building strong routines and positive behaviour habits
- Learning through play and purposeful exploration
- Encouraging curiosity and creativity
- Supporting every child as an individual
- Creating a strong sense of belonging within the Tyndale Family

Most importantly, we want children to feel excited to come to school each day, confident to try new things and proud of their achievements.

We are privileged to be part of your child's early education journey and look forward to working closely with you throughout this very special year.

Your Teachers



Ms Lett



Ms Cox

Your Learning Partners



**Your Headteacher
Mr Crouch**



Ms Inkster



Ms Derrick

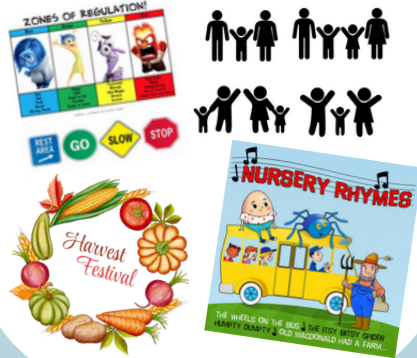


**Your Deputy
Headteacher
Ms Kirby**

STAFF

EYFS CURRICULUM

Term 1 ALL ABOUT ME!



Term 2 STORIES AND CELEBRATIONS.



Term 3 CASTLES AND HOUSES



Term 4 GROWING



Term 5 PEOPLE WHO HELP US.



Term 6 FUN IN THE SUN!



Here at Tyndale we understand that starting school can be a nervous time - for both parents and children!
Here are eight snippets of advice we suggest you put into action in the lead up to September!

It's helpful if your child can recognise their name before starting school. They will have their own coat peg from day one and recognising their name will be a big help!

Can your little one put their shoes and coats on all by themselves?

There's the great trick of drawing arrows in their shoes and the 'flipping' their coat over their heads trick to help them!

Remind your child about the importance of washing their hands before eating a snack or lunch.

Please try and potty train your little one before September.

Whilst of course we are here to help if necessary, potty training means your child will have much more independence and confidence going to the toilet when starting school!

Can your child use a knife and fork?

Whether they have a school dinner or packed lunch, try and ensure your child can open their packets and use a knife and fork independently.

Try and introduce "Ready, Respectful, Safe." These are our Tyndale rules and your children will hear this frequently at school.

Encourage your little one to 'use their words' when they want or need something.

Please ensure your child is dressed for the weather and brings in wellies and waterproofs each day.

HINTS & TIPS

Getting READY



Growing independence

Taking care of themselves

- Putting on/taking off their coat and shoes
- Using the toilet and washing their hands
- Getting dressed with little help, e.g. after using the toilet or doing PE
- Using cutlery (e.g. fork and spoon, chopsticks) and drinking from an open cup
- Spending time away from you, learning they can be looked after by caring adults

Play, creativity and curiosity

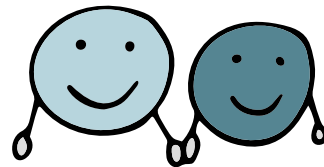
- Taking part in imaginative play (e.g. role play)
- Drawing, painting, colouring and sticking
- Counting, building and doing puzzles
- Sharing story books with caregivers, looking at pictures and talking about the characters
- Exploring the world around them (e.g. looking closely at the natural world, noticing numbers, patterns and shapes, playing safely with objects at home)

At school your child will be meeting lots of new people and make new friendships. Some things to help them get ready include:

Building relationships and communicating

Being with others

- Practising sharing and taking turns with toys
- Talking to them about how they are feeling and why
- Looking at story books together and speaking about what characters are feeling is a good way to do this
- Beginning to recognise what others are feeling, e.g. understanding if a friend is sad
- Encouraging them to set boundaries for themselves and others (e.g. knowing how to say 'no')



Communication and language

- Singing along with songs and nursery rhymes
- Talking happily to others about activities, experiences and the world around them
- Showing they need help by speaking clearly (in basic English or sign language)
- Recognising the pattern of their name (so they can find it on their coat peg or jacket)

Listening and engaging

- Paying attention for short periods of time
- Listening to and following simple instructions
- Carrying on with a task even when it's difficult and bouncing back if things go wrong



Healthy routines

- Going to bed around the same time each night, waking up in time to get ready for school
- Limiting screen time to the recommended daily amounts (see advice)
- Eating a healthy diet and trying new foods
- Brushing their teeth with fluoride toothpaste twice a day (you'll need to supervise this until they are at least 7)

CONTACT DETAILS



Tyndale Primary School, Yate,
Bristol, BS37 5EX



admin@tyndaleprimary.co.uk



01454 867 180



07860 054 543

Please note that this mobile number
only has the ability for SMS not calls

