

Friday 13th March 2026

# Tyndale Times



## WEEKLY UPDATE

As we continue through Term 4, it has been lovely to see children demonstrating our school values of ambition, resilience, independence and collaboration in their learning and around the school. I have enjoyed visiting classrooms and seeing the curiosity and confidence growing in our pupils. Thank you also to our parent community for raising money to buy Rex a much-deserved get well soon gift – such a thoughtful gesture that shows the strength of our Tyndale community.

*Mr Crouch*

## LEARNING



PSHE (Personal, Social, Health and Economic education) is a vital part of our curriculum, providing children with the essential tools to navigate the world with confidence. This term, we have been focusing on how making **healthy choices**, such physical exercise and a well-balanced diet, helps us to stay both physically and mentally healthy.

*Ms Kirby*

## NEWS

- We have a range of music performances happening next week.
- Come along and see the children perform their instruments!
- Parent/carer survey - we need your voice! Please could you complete this survey to celebrate what we have achieved this year and make suggestions on what could be improved.

## STAY IN TOUCH

### Team Tyndale

[www.tyndaleprimary.co.uk](http://www.tyndaleprimary.co.uk)

[admin@tyndaleprimary.co.uk](mailto:admin@tyndaleprimary.co.uk)

01454 867 180

Follow us on **Facebook**, **Instagram** or **X** to see what we are up to!



next  
WEEK

## KEY DATES



- Year 5 J Sax Performance - **Tuesday 17th March at 2 pm, KS1 Hall**
- Year 3 Strings Performance - **Thursday 19<sup>th</sup> March at 9:30 am, KS1 Hall**
- Year 6 J Sax Performance - **Thursday 19<sup>th</sup> March at 2pm, KS2 Hall**
- Year 4 Strings Performance - **Thursday 19<sup>th</sup> March at 2:30 pm, KS1 Hall**



## DOJO LEADERBOARD



Year 6	Goulsom
Year 5	Kenoli
Year 4	Edie
Year 3	Rosie
Year 2	Luna
Year 1	Miley
Year R	Iona



## SHOUTOUTS



- All the children who tried out for a part in 'Annie' - we were all so impressed by your resilience and bravery!
- Friends of Tyndale - for supporting our community in so many ways.
- Ms Smyth - for being a calm and caring adult that the children trust and can depend upon!
- Ms Frost - for the energy and enthusiasm you put into everything you do!

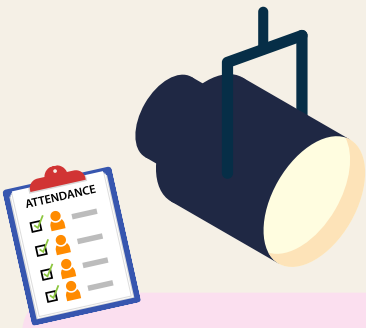


## TEAM TYNDALE



- **Vision** - To provide all children with an exceptional education in a warm, welcoming environment that inspires them to lead change and enables them to become curious life-long learners.
- **Values** - Child-centred, Ready, Respectful, Safe, Ambitious, Resilient, Collaborative, Independent
- **Mission** - Best chance of success!

**EXCEPTIONAL  
EDUCATION**



## ATTENDANCE SPOTLIGHT



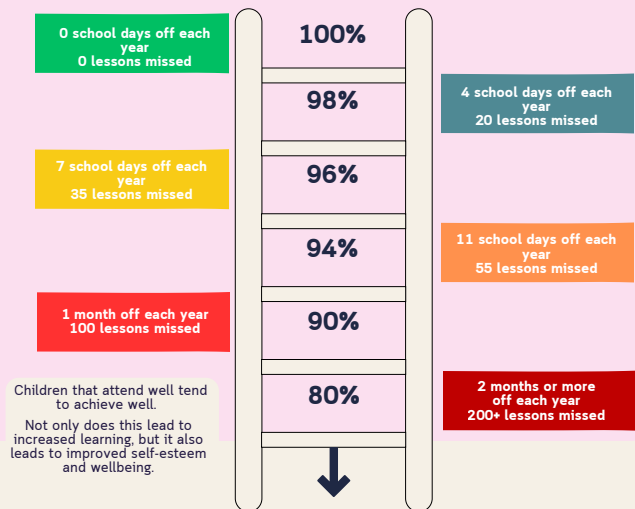
### Absence from School

- Absence should only occur when your child is far too ill to attend.
- If your child is suffering from **Colds, Headaches, Tiredness** or **Sore throat** we would suggest that you administer paracetamol or ibuprofen and bring them into school, if their condition deteriorates, we will always call you.
- Family holidays and day trips must be arranged outside of school hours.
- Medical or dental appointments should be arranged outside of school hours, if this is not possible supporting evidence should be provided.

### ATTENDANCE FOR THIS WEEK...



<b>YEAR R</b>	<b>96%</b>	<b>YEAR 4</b>	<b>95%</b>
<b>YEAR 1</b>	<b>91%</b>	<b>YEAR 5</b>	<b>94%</b>
<b>YEAR 2</b>	<b>95%</b>	<b>YEAR 6</b>	<b>95%</b>
<b>YEAR 3</b>	<b>91%</b>	<b>WHOLE SCHOOL</b>	<b>94%</b>

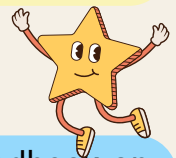


## SEND SPOTLIGHT

Some children have been sent up on Arc - a system we are now using to create learning profiles for learners who spend lots of their school week in interventions and accessing different provisions. If you have received an invite, but you are unsure how to use Arc as a parent, please speak to your child's class teacher.



## CHARACTER SPOTLIGHT



Thank you to all the parents, pupils, staff and governors who shared their feedback on our draft Relationships and Sex Education (RSE) policy. We are grateful for the time taken to respond and have carefully considered the suggestions from all stakeholders. This work supports our character curriculum values of being Ready, Respectful and Safe, helping children learn about positive relationships and keeping themselves and others safe. The pupil voice findings will be shared with children in assembly next week, and the updated policy will be sent to parents in due course once feedback from pupils, parents, staff and governors has been incorporated. Thank you for your continued support.



**TINY**

THE TYNDALE  
TORTOISE



**PIN BOARD**

