

Friday 26th September 2025

Tyndale Times



WEEKLY UPDATE



Thank you to all parents/carers that attended the Coffee Morning yesterday, it was lovely seeing you all.

On Thursday this week, we have Census Day. The more children in school and having a school dinner, the more funding we will receive as a school. Please could you work with us to ensure your child is in school on time on Thursday and has a school meal (pizza party) if possible.

Mr Crouch

NEWS

Help our school funding!

On Thursday, we have our Pizza Party and Disco in school time.

Thursday is Census day, which means the government will use the numbers of children who are in and have school dinners on this day to identify the level of funding our school receives.

LEARNING



The school is abuzz with activity as children prepare for the Harvest Festival assemblies next week. Children have also been busy learning about the importance of exercise as part of National Fitness Day. Finally, we have enjoyed performances from Years 1 and 2 who have performed the traditional tales they've been learning: 'Little Red Hen' and 'Little Red Riding Hood'.

Ms Kirby

STAY IN TOUCH

Team Tyndale

www.tyndaleprimary.co.uk

admin@tyndaleprimary.co.uk

01454 867 180

Follow us on **Facebook**, **Instagram** or **X** to see what we are up to!



**next
WEEK**

KEY DATES



- **Wednesday 1st October 2025 at 09:00** - KS1 (Years R, 1, 2) Harvest Festival - parents/carers invited in. Please head to the main office
- **Thursday 2nd October 2025 at 09:00** - KS2 (Years 3, 4, 5, 6) Harvest Festival - parents/carers invited in. Please head to the main office
- **Thursday 2nd October 2025** - Census Day - All children in school - Pizza Party and Discos (during school time)



DOJO LEADERBOARD



1 st	Ivy - Year 1	
2 nd	Bennett - Year 2	
3 rd	Khalil - Year 2	
4 th	Nehemiah - Year 1	
5 th	Stefy - Year 4	
6 th	Caleb - Year 2	
7 th	Ernest - Year 6	
8 th	Ryan - Year 6	
9 th	Lilly E - Year 4	
10 th	Robin - Year 1	

SHOUTOUTS



- My Piper-Thompson for leading the way with LbQ!
- Ms Cochrane for being an asset to Year 2! We are thrilled to have you in Team Tyndale!
- Ms Matthews for her endless positivity and enthusiasm! You have wonderful relationships with the children and it is clear why.
- Akram, Leo and Adetola for being the newest students to join Tyndale. We are so happy to have you!

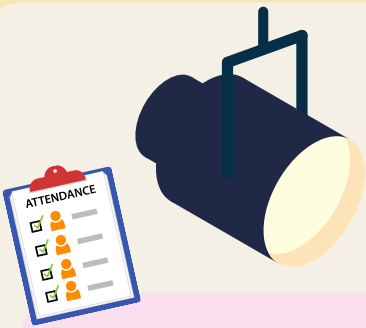


TEAM TYNDALE

- **Vision** - To provide all children with an exceptional education in a warm, welcoming environment that inspires them to lead change and enables them to become curious life-long learners.
- **Values** - Child-centred, Ready, Respectful, Safe, Ambitious, Resilient, Collaborative, Independent
- **Mission** - Best chance of success!

EXCEPTIONAL
EDUCATION





ATTENDANCE SPOTLIGHT



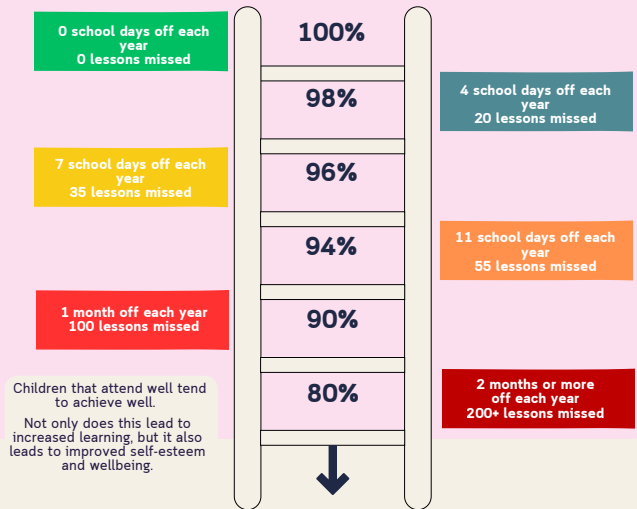
Absence from School

- Absence should only occur when your child is far too ill to attend.
- If your child is suffering from **Colds, Headaches, Tiredness** or **Sore throat** we would suggest that you administer paracetamol or ibuprofen and bring them into school, if their condition deteriorates, we will always call you.
- Family holidays and day trips must be arranged outside of school hours.
- Medical or dental appointments should be arranged outside of school hours, if this is not possible supporting evidence should be provided.

ATTENDANCE FOR THIS WEEK...



YEAR 6	91%	YEAR 2	95%
YEAR 5	96%	YEAR 1	93%
YEAR 4	97%	YEAR R	92%
YEAR 3	94%	WHOLE SCHOOL	94%



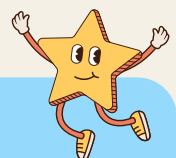
SEND SPOTLIGHT

Did you know you can use the NHS Right to Choose pathway to request an autism or ADHD assessment for your child?

If your GP agrees an assessment is appropriate, you have the legal right to ask for a referral to an NHS-approved provider of your choice, rather than joining the local waiting list. This can sometimes mean a quicker assessment, and the diagnosis is recognised by the NHS and schools. To use this route, you must be registered with a GP in England and choose a provider who has an NHS contract for children's assessments. Not all providers offer follow-up care or medication, so check carefully before deciding. If you'd like to use Right to Choose, research suitable providers, then ask your GP to make the referral directly. More information is available at www.nhs.uk



CHARACTER SPOTLIGHT



Each class has now started their Character Passports, which will help them set personal goals and celebrate their achievements. From now until the end of Term 1, each class will be working towards their own target, building independence and responsibility along the way. For the rest of this term, the children will be focusing on different targets such as being recognised by an adult for showing respect, doing up their own coats, and remembering to bring in their PE kit. These small but important steps will encourage positive habits and help every child grow in confidence.





TINY

THE TYNDALE
TORTOISE



PIN BOARD



SHARE

THINKING ABOUT FINDING THE RIGHT SCHOOL FOR YOUR CHILD?
SEPTEMBER 2026
We don't need to hold an Open Day to show off...
Tyndale is the show!

BOOK A SCHOOL TOUR
Anytime between September to January

GET IN TOUCH TO BOOK NOW
01454 867 180
admin@tyndaleprimary.co.uk
www.tyndaleprimary.co.uk

TYNDALE PRIMARY SCHOOL

Give your child the **BEST CHANCE OF SUCCESS**

